

The background features large, stylized, three-dimensional letters 'FPC' in a gold and silver color scheme. The letters are set against a black background and have a metallic, reflective appearance with highlights and shadows. A white circular area is overlaid on the right side of the image, containing the text.

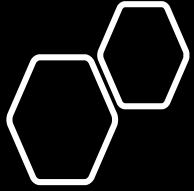
Fort Payne City Schools

2021-2022 Path to Reopening

Message from Superintendent

Fort Payne City Schools is committed to providing high-quality instruction, a safe/clean learning environment, and mental health support for all students and staff. We are looking forward to the start of the 2021-2022 school year and are working diligently to create a plan that supports our reopening. We know that we cannot anticipate every challenge or obstacle that might present itself but be assured that we are making every effort to address a safe start and daily routine for the school setting. We thank you for your continued support as we work together to make this a safe and successful school year!

Jim Cunningham



Plan Highlights

- **School start date and calendar**
- **Traditional Learning or Virtual Learning options for Parents/Guardians**
- **Traditional School Day**
- **Transportation Guidelines**

Parent Communications

All communications related to FPCS will be communications to parents/guardians through the following methods.

- FPCS Website: www.fpcsk12.com
- Email
- Social Media-Facebook: www.facebook.com/fortpayneschools
- Voice messaging system
- Traditional media outlets

Fort Payne City Schools | 2021-2022 CALENDAR

Institute Day
 3-6 Teacher PD Days
 9 Teacher PD Day
 10 First Day for Students

AUGUST '21						
S	M	T	W	Th	F	S
1	2	3	4	5	6	7
8	9	10	11	12	13	14
15	16	17	18	19	20	21
22	23	24	25	26	27	28
29	30	31				

16 Student Days
 5 Teacher PD Days

JANUARY '22						
S	M	T	W	Th	F	S
						1
2	3	4	5	6	7	8
9	10	11	12	13	14	15
16	17	18	19	20	21	22
23	24	25	26	27	28	29
30	31					

3 Teacher PD Day
 4 Students Return
 7 Report Cards
 17 Martin Luther King Day
 *No School

19 Student Days
 1 Teacher PD Day

6 Labor Day
 • No School
 10 Mid-term Ends

SEPTEMBER '21						
S	M	T	W	Th	F	S
			1	2	3	4
	6	7	8	9	10	11
12	13	14	15	16	17	18
19	20	21	22	23	24	25
26	27	28	29	30		

21 Student Days

FEBRUARY '22						
S	M	T	W	Th	F	S
		1	2	3	4	5
6	7	8	9	10	11	12
13	14	15	16	17	18	19
20	21	22	23	24	25	26
27	28					

4 Mid-term Ends
 21 President's Day
 *No School

19 Student Days

11-12 Fall Break
 *No School
 8 End of 1st 9 Weeks
 15 Report Cards

OCTOBER '21						
S	M	T	W	Th	F	S
					1	2
3	4	5	6	7	8	9
10	11	12	13	14	15	16
17	18	19	20	21	22	23
24	25	26	27	28	29	30
31						

19 Student Days

MARCH '22						
S	M	T	W	Th	F	S
		1	2	3	4	5
6	7	8	9	10	11	12
13	14	15	16	17	18	19
20	21	22	23	24	25	26
27	28	29	30	31		

11 End of 3rd 9 Weeks
 18 Report Cards
 28-31 Spring Break
 *No School

19 Student Days

11 Veterans Day
 *No School
 12 Mid-term Ends
 22-26 Thanksgiving Break
 *No School
 25 Thanksgiving Day

NOVEMBER '21						
S	M	T	W	Th	F	S
	1	2	3	4	5	6
7	8	9	10	11	12	13
14	15	16	17	18	19	20
21	22	23	24	25	26	27
28	29	30				

16 Student Days

APRIL '22						
S	M	T	W	Th	F	S
					1	2
3	4	5	6	7	8	9
10	11	12	13	14	15	16
17	18	19	20	21	22	23
24	25	26	27	28	29	30

1 Spring Break
 *No School
 4 Students Return
 15 *No School
 22 Mid-terms Ends

19 Student Days

17 End of 2nd 9 Weeks
 Last Day for Students
 20-31 Christmas Break
 *No School
 25 Christmas Day

DECEMBER '21						
S	M	T	W	Th	F	S
			1	2	3	4
5	6	7	8	9	10	11
12	13	14	15	16	17	18
19	20	21	22	23	24	25
26	27	28	29	30	31	

13 Student Days

MAY '22						
S	M	T	W	Th	F	S
1	2	3	4	5	6	7
8	9	10	11	12	13	14
15	16	17	18	19	20	21
22	23	24	25	26	27	28
29	30	31				

19 Graduation
 20 Graduation Make-up
 26 End of 4th Nine Weeks
 26 Last day for Students
 27 Teacher PD Day

19 Student Days
 1 Teacher PD Day

Grading Period

Teacher Work Days

First Term Aug 10 – Oct 8

Holiday/No School

43 Days

Second Term Oct 13 – Dec 17

Student Return

42 Days

180 Student Days

7 Teacher PD/Work Days

K- 6 Report Cards go home May 26

7-12 Report Cards may be printed or will be available at FPMS/FPHS June 1 from the hours of 8:00 12:00

Grading Period

Third Term Jan 4 – Mar 11
 47 Days

Fourth Term March 14 – May 26
 48 Days

Traditional
Face-to-
Face
Instruction/
Start Date

- All new and returning students in grades K-12 will not register onsite. In-District registration forms can be accessed at www.fpcsk12.com Students will return to school on August 10th.

- Virtual learning has been an option for FPHS students for several years. Our plans are to return to 100% face-to-face in school instruction. However, we will take into consideration any individual cases that could require a virtual setting for grades K-12.

**If needed,
how will
the
Virtual
School
Work?**

How will the Virtual School Work?

Students participating will be counted in attendance as they participate daily and turn in assignments. Reliable internet service will be required to participate. Students who select the virtual option will be required to stay with this option for at least nine weeks. After, the first grading period, students will have the option to change their choice. Additionally, there will be an opportunity to transfer from full-time virtual learning to the school/traditional classroom setting at the end of each nine weeks. Students will use district-approved learning management platforms such as Google Classroom, Canvas, or Schoology.

Additional Considerations



Extracurricular Activities – Students must meet the same extracurricular activity eligibility requirements as students enrolled in the traditional day program, including, but not limited to, any applicable Alabama High School Athletic Association (AHSAA) requirements.

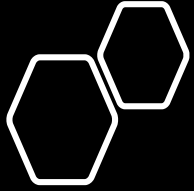


All elective courses may not be offered to full-time virtual program students.



Students can be required to be on campus for certain events such as class meetings, state testing, or other activities designated by the school principal.

Parents of Fort Payne High School students who have declared each student's preference for virtual instruction, or those who are interested in doing so may visit our website at www.fpcsk12.com to complete the Virtual School Full-Time Registration/Application form for 2021-2022.



FPCS Persons with COVID-19

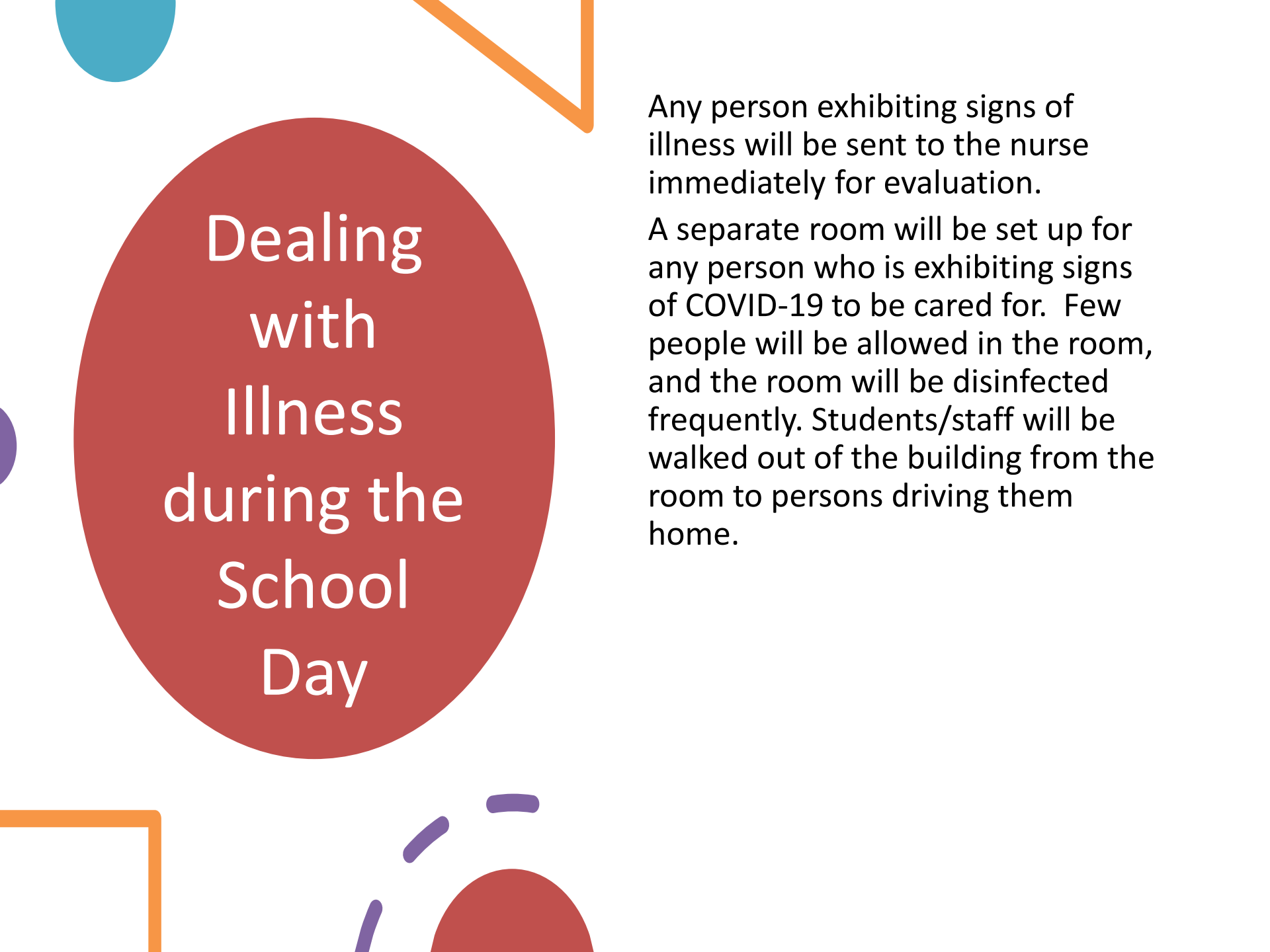
Exclusion from School

Students and employees exhibiting symptoms of COVID-19 without other obvious explanations are prohibited from coming to school, and if they do come to school, they will be sent home immediately. Persons will not be allowed to return to the school campus until they have completely recovered according to Alabama Department of Public Health guidelines.

All Staff and Parents should be familiar with the symptoms of COVID-19 based on CDC Guidance:

- A fever or chills**
- Cough**
- Shortness of breath or difficulty breathing**
- Fatigue**
- Muscle or body aches**
- Headache**
- New loss of taste or smell**
- Sore throat**
- Congestion or runny nose**
- Nausea or vomiting**
- Diarrhea**

Staff and students who have recently had close contact with a person with COVID-19 should also stay at home and monitor their health.



Dealing with Illness during the School Day

Any person exhibiting signs of illness will be sent to the nurse immediately for evaluation.

A separate room will be set up for any person who is exhibiting signs of COVID-19 to be cared for. Few people will be allowed in the room, and the room will be disinfected frequently. Students/staff will be walked out of the building from the room to persons driving them home.

Siblings or Other Students in the Household with COVID-19 & When to Self-Quarantine

Siblings or Other Students in the Household with COVID-19

- If a student is excluded from school due to COVID-19 symptoms or has had a positive COVID-19 test, his or her siblings or other students living in the same household will be questioned and if they exhibit symptoms, they will also be excluded from school. If they do not exhibit symptoms, they may still be excluded from school and asked to self-quarantine.

Self-Quarantine

- If a student or employee has recently had close contact with a person with COVID-19 symptoms or diagnosed with COVID-19 or has recently traveled from somewhere considered to be a “hot spot” by the CDC, the LEA may exclude the student or employee from the school building and recommend that they self-quarantine for the current period of time recommended by the CDC.

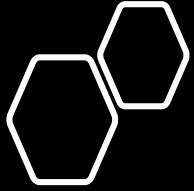
FPCS Facility Cleaning Procedures

As soon as FPCS becomes aware of a student or employee that may have COVID-19 or that has been excluded from school or recommended to self-quarantine, the custodial staff will be informed so that all desks, lockers and workspaces of the person are thoroughly disinfected.

Parent Requirements

Home Screening

- Home is the first point of the Screening continuum.
- Parents should check their child's temperature. Students with temperature of 100.4 or higher should stay at home and consider COVID testing if there is no other explanation.
- Monitor for the following COVID symptoms every morning and keep student home if present: cough, congestion, shortness of breath, or gastrointestinal symptoms.
- Teach and reinforce proper handwashing, coughing into elbow/tissue; not sharing personal items/supplies; self-reporting any symptoms to teacher/nurse.



FPCS Face Covering and Social Distance Requirements

Recommendations regarding face mask/coverings differ based on the level of community spread. ***Wearing a mask is a personal preference. Due to the current Threat Level, no masks are required.***

Also, students riding a bus will not be required to wear a face mask/covering.

FPCS additional hygiene, cleaning & disinfecting measure for the building

- All persons are encouraged to wash hands frequently.
- Place hand sanitizer hygiene stations at the entrances of the building. **All persons entering the building should sanitize their hands.**
- Encourage students and employees to sanitize their backpacks and personal items at the beginning and end of the day and separate personal items into cubbies or baskets that are not shared with other students. Do not allow students to share lockers.
- Require all persons to wash hands after blowing noses, coughing or sneezing or when in contact with bodily fluids.
- Discourage shaking hands, hugging or giving high-fives, etc.,
- Make sure that disinfectant and related supplies are available to all employees close to their workstations.
- Ensure that there are adequate sinks, soap and paper products for all classes or other sanitizing stations.
- Effective hand sanitizer is made available to all persons working or learning in the building. **Parents should notify the school if their child is allergic to any form or common ingredients of hand sanitizer.**

FPCS Signage

Providing Guidance on COVID-19

- Post signs in bathrooms with directions on how to effectively wash hands.
- Materials provided to employees and students should include information on how to recognize the signs of infection and directives not to come to school if sick.



Areas of Special Consideration

Water Fountains

- Water fountains will be cleaned throughout each day. FPCS will purchase disposable cups for students and staff to use at water fountain.

Assessments

Formative and State Required Assessments

- All students will participate in all formative assessments. This includes both traditional in-person and virtual students. Virtual students will be required to come on campus for state assessments.
- Grades K-3 will participate this fall in literacy assessments per state law.

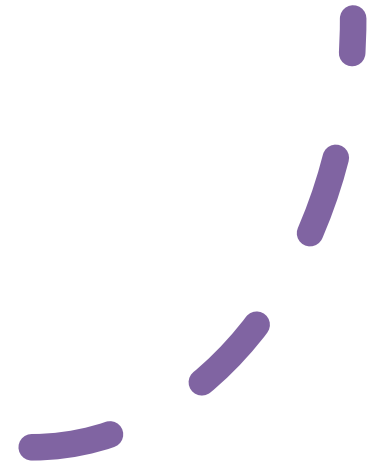
Guidance for Physical Education Classes

- Schedule outdoor activities as much as possible with weather conditions being considered.
- Students disinfect hands in and out of PE class (hand-sanitizing stations, portable handwashing stations).

Guidance for Music/Band Classes

Guidance for Music/Band Classes

- Students disinfect hands in and out of the music classrooms (hand-sanitizing stations).



Visitors/Check-in & Out/Absences

Visitors to School Campus

- During the pandemic, visitors may be limited in their access to the building

Excuses for Absences

- Parents are encouraged to upload documentation for excused absences and email to appropriate staff at each school
- Hand delivered excuses will be given to classroom teacher

Transportation

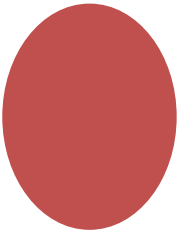
Preparation and Cleaning:

FPCS will inspect all buses and transport vehicles for cleanliness and safety daily.

- Buses will be disinfected daily. Buses will be sanitized each morning and afternoon.

FPCS Transportation Modification Considerations

- Assign students to seats; seat students with members of same household when feasible
- Limit students to one route and prohibit practices such as being picked up and dropped off in different locations, using different routes.
- Prohibit eating or drinking (unless medically required) or chewing gum on the bus.
- Hand sanitizer stations will be installed inside buses or provide drivers and passengers with access to alcohol-based hand sanitizers containing at least 60% alcohol on the bus.



Future Information

This document is considered a working document and may be updated based on additional information regarding COVID-19 when it is released. This document was developed around current policies, practices, and strategies that the FPCS district and schools must implement in order to ensure the healthiest and safest environment while mitigating risk throughout the 2021-2022 school year.